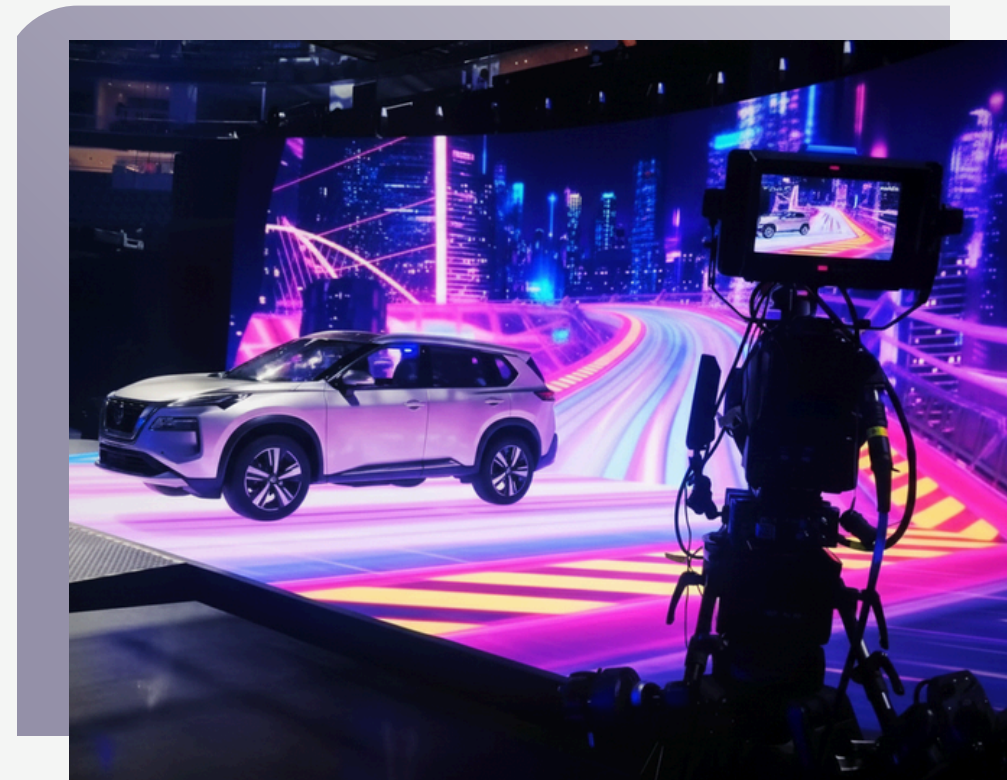


## Doesn't Stop at the Walls

Engineered for the rigorous demands of Virtual Production, In-Camera VFX, and immersive experiences.



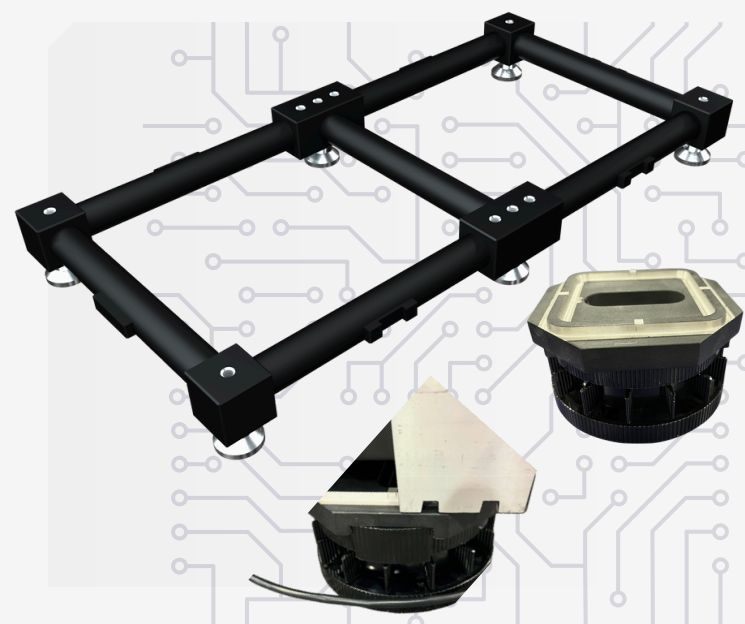
-  Tour-Ready Durability
-  High-Impact Resin Surface
-  Rapid, Tool-Free Assembly
-  Flawless On-Camera Visuals
-  Realistic Ground Reflections
-  Interactive Digital Canvas



# HOLODECK HoloFloor™



## The Foundation for Your Vision



## Seamless Ecosystem Integration

Designed as the foundational element for HOLODECK LED™ VP volumes, HoloFloor™ pairs perfectly with HoloDeck walls and HoloSky™ ceilings for a truly immersive virtual stage.

## Built for the Battlefield of Production

In modern production, the stage is no longer just a platform—it's part of the canvas. Virtual environments demand a seamless, robust, and camera-perfect surface.

Enter HoloFloor™. The definitive solution for grounding your digital worlds in reality.

Built to perform under pressure, HoloFloor™ provides the unyielding, high-fidelity surface essential for today's most ambitious productions.

## 150° Angle View



## ENGINEERED FOR IMPACT

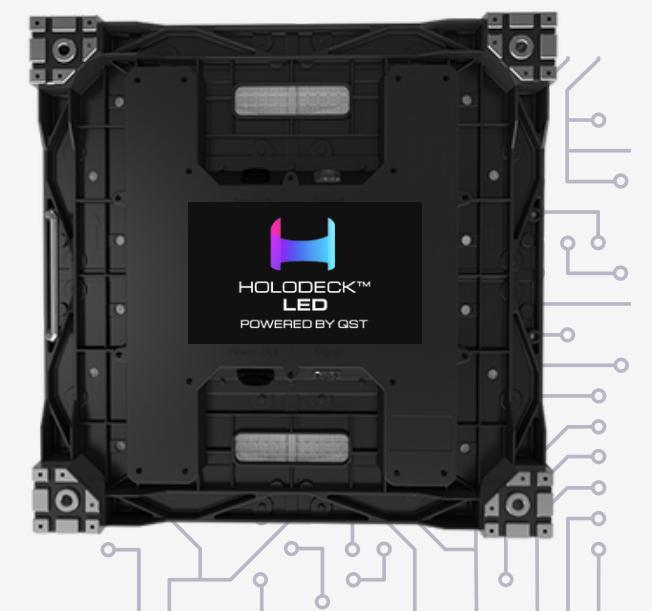


## Uncompromising Durability

A robust Aluminum Die-Cast chassis ensures reliability and withstands the demanding environment of a busy production set.

## Flawless On-Camera Performance

With refresh rates up to 7680 Hz and advanced Brompton R2 processing, HoloFloor™ delivers pristine, flicker-free imagery directly to the camera sensor.



## True-to-Life Color Fidelity

Achieve stunning realism with extensive color gamut coverage, including up to 99.6% of DCI-P3, for perfect color matching between your physical and digital assets.





## Step Into the Story

### Broadcast & Live Events

Create dynamic, visually stunning stages for broadcast studios and live productions that captivate audiences both in-person and on-screen.

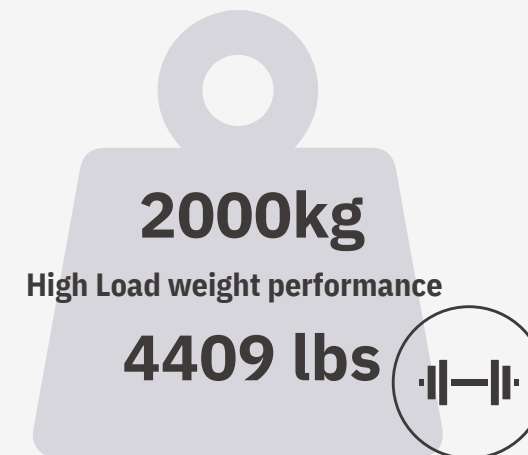


### Immersive Installations

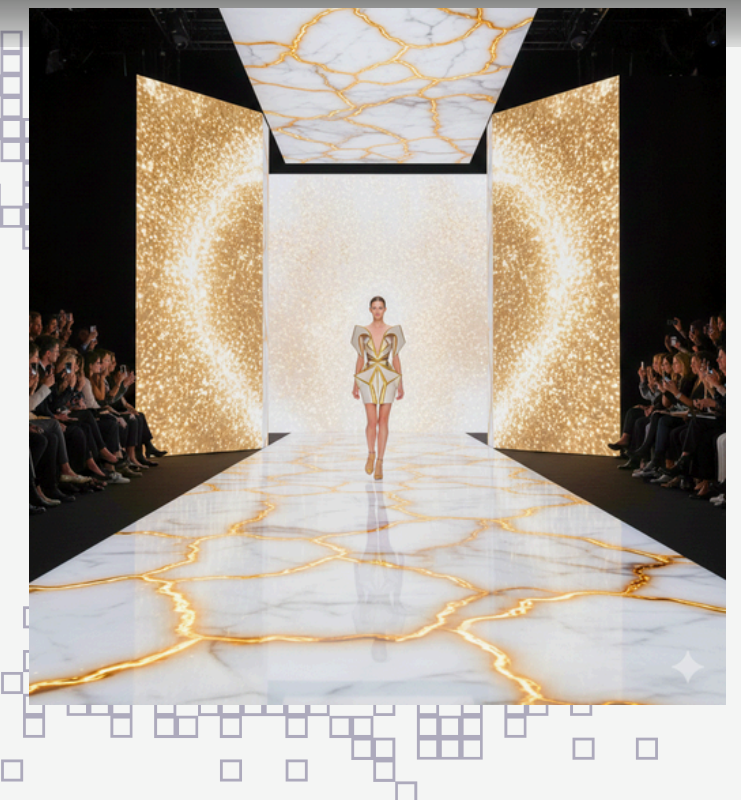
Transform architectural spaces, interactive exhibits, and retail environments with a durable and spectacular flooring solution that redefines the visitor experience.



## WHERE VISION TAKES THE STAGE



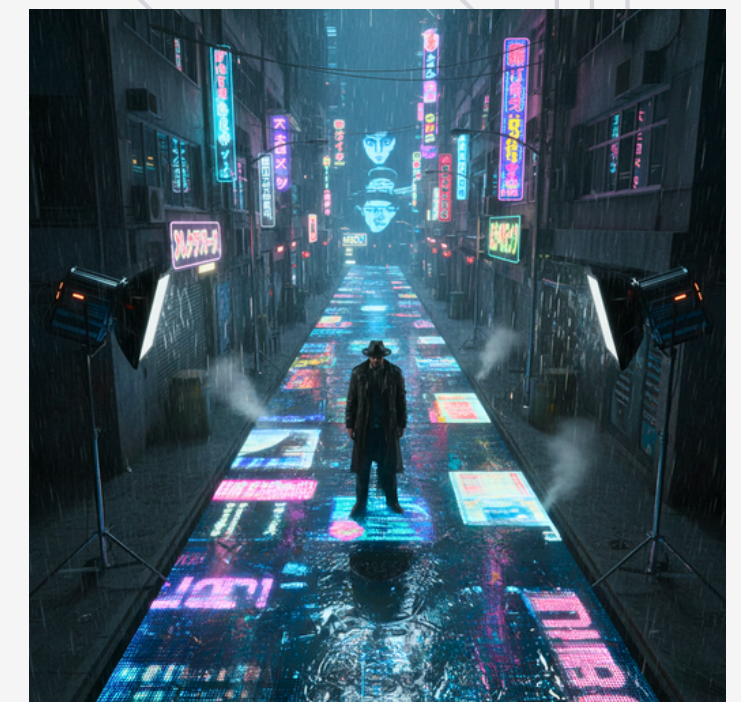
High Load weight performance



### Virtual Production & XR

The essential ground plane for actors and props within ICVFX and XR stages, enabling seamless interaction with virtual environments.

Ready to see how HoloFloor™ can redefine your production capabilities?





# HOLODECK HoloFloor™ Series

## Specifications

### PERFORMANCE

Pixel Pitch	2.3 mm	2.6 mm
Pixel Density	386,626 Px/M²	147,929 Px/M²
Brightness (Calibrated @ 6500K)	1800 NITS	1000 NITS
Contrast Ratio	8500:1	
Minimum Viewing Distance	3 FT	
Viewing Angle (H/V)	>170° / >170°	

### PANEL

Panel Dimensions (W x H)	500 x 500 mm	
Panel Resolution (W x H)	216 x 216 pixels	192 x 192 pixels
Panel Weight	52 kg / 114.4 lbs	61 kg / 134.4 lbs
Material	Aluminum Die-Cast	
LED Type	SMD 1515	
Receiver Card	Brompton R2	
Serviceability	Front Module/Rear Power Box	

### ELECTRICAL

Max Power Consumption	600 Watts
Typical Power Consumption	240 Watts
Working Voltage	110-240V AC, 50/60Hz

### ENVIRONMENTAL

Operating Temperature	-10 to +40 °C
Humidity	5% - 99% RH
IP Rating	IP45

### VIDEO PROCESSING & SYSTEM

Max Refresh Rate	7680 Hz
Max Frames per Second	120 FPS
Gamut Coverage	DCI-P3 (up to 99.6%)  BT.2020 (up to 90%)
Latency	<15 ms or <2 frames
Video Sources	DP, SDI, S-Video, Composite, HDMI, VGA, CVBS

### CERTIFICATIONS

Compliance	ETL, MET, CE, FCC, RoHS
------------	-------------------------





## QUESTIONS?



### CONTACT US TODAY ↘

#### Office/Sales:

office@holodeckled.com  
213-996-0655

#### Connect<sup>3</sup>:

connect@holodeckled.com  
213-996-0746

### ASK YOUR LOCAL REP/DISTRIBUTOR

#### CONTACT:

Email;

Phone:



[www.holodeckled.com](http://www.holodeckled.com)



HOLOSKY™ RGBW



TRUEALIGHT®

Brompton TrueLight Technology Supported



Copyright © 2025 HOLODECK LED™ - a subsidiary of QST LED