



RGBW Full Spectrum

Brompton TrueLight® Tech

VIRTUAL PRODUCTION

Realism,
Perfected.

True-to-Life Light



HOLODECK™
LED
POWERED BY QST



HOLODECK HoloSky™

Innovative

In the world of virtual production, the ceiling is the final frontier. It's the source of light, the sky, the atmosphere—the critical element that bathes your scene in realism.

A standard LED ceiling can display an image, but the **HoloSky™** does more; it transforms the ceiling into a dynamic, precision lighting instrument. It's engineered not just to be looked at by a camera, but to actively paint your set and talent with authentic, responsive light, seamlessly bridging the gap between the digital world and the physical stage.



WWW.HOLODECKLED.COM



Pixel Pitch
3.9mm, 5.9mm, 7.8mm

Product Features

- Die-cast Aluminum**
Magnesium or Carbon Fiber options
- Virtual Production Grade**
RGBW Full Spectrum
- Innovative Processing**
Brompton TrueLight® Technology
- Brightness**
5000 NITS
- Panel Dimensions**
500x1000mm



3840Hz Refresh Rate

Advanced Heat-Management
Eliminate Heat-Spot +
Unparalleled Brightness



Color Fidelity

TLCI > 90%, CRI > 90%

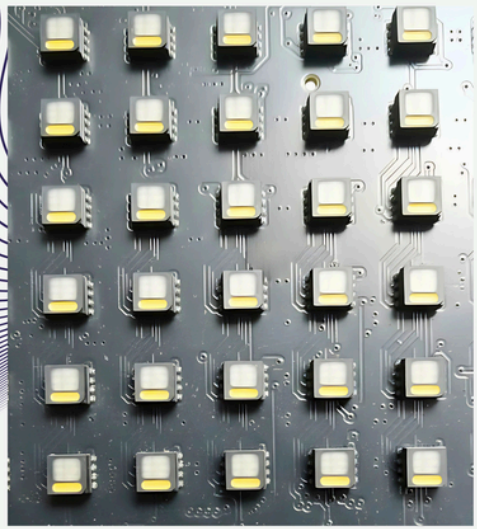


Master Your Color Pipeline

Lighting is the language of cinema. The **HoloSky™** allows you to speak it with perfect fidelity. The challenge for every Director of Photography in a virtual environment is trusting the light source. With our full-spectrum RGBW diode structure, that trust is built in.

The addition of a dedicated white LED moves beyond the limitations of standard RGB, allowing for the creation of pristine, untinted whites and a vastly expanded color gamut. This translates to skin tones rendered with breathtaking accuracy and environmental light that captures every subtle hue. With a TLCI and CRI exceeding 90%, what you see on set is precisely what you get in your final render.

RGB + W - Full Spectrum IBL Lighting



Buttery smooth
gradient control and
superior dithering
elimination, especially
under 5% brightness
with PANTONE® validated
colors



Stop simply containing your scenes

Start Illuminating Them

The HoloSky™, powered by Brompton's industry-leading TrueLight® technology, redefines the ceiling as an active, creative tool.

It excels at Image-Based Lighting (IBL), casting reflections and ambient light from the virtual world onto real-world objects and actors with stunning realism.

Imagine the glint of a virtual explosion authentically reflecting off an actor's helmet, or the soft, shifting light of a CG sky casting accurate shadows. Brompton processing ensures that every gradient is rendered with buttery-smooth precision, free of banding or artifacts, even at the lowest brightness levels.



The Ceiling is Now Your Canvas

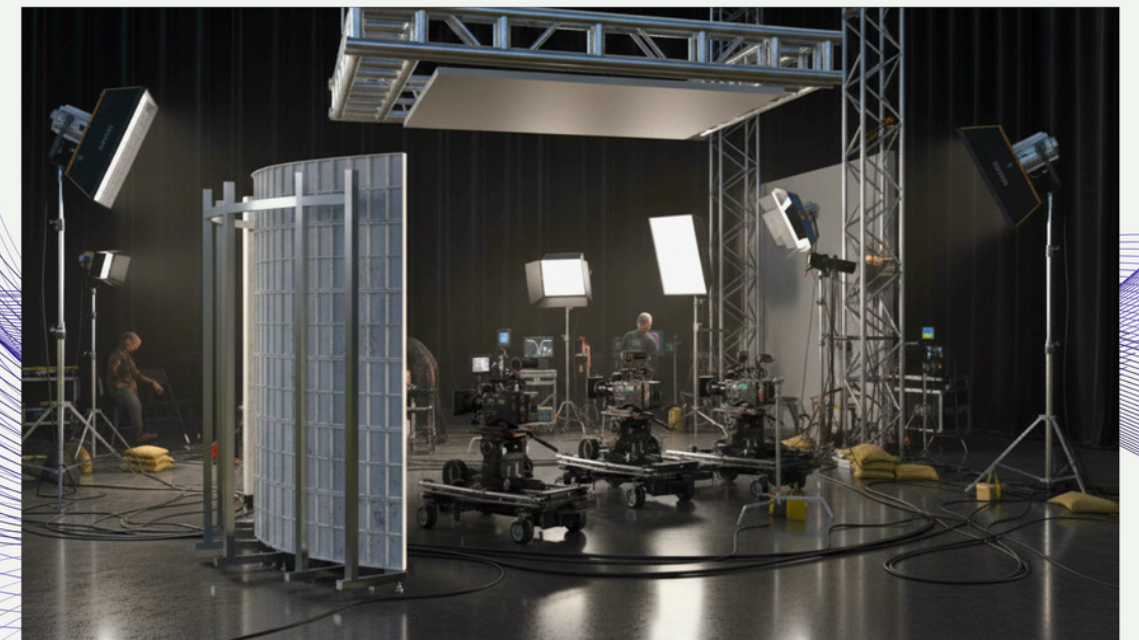
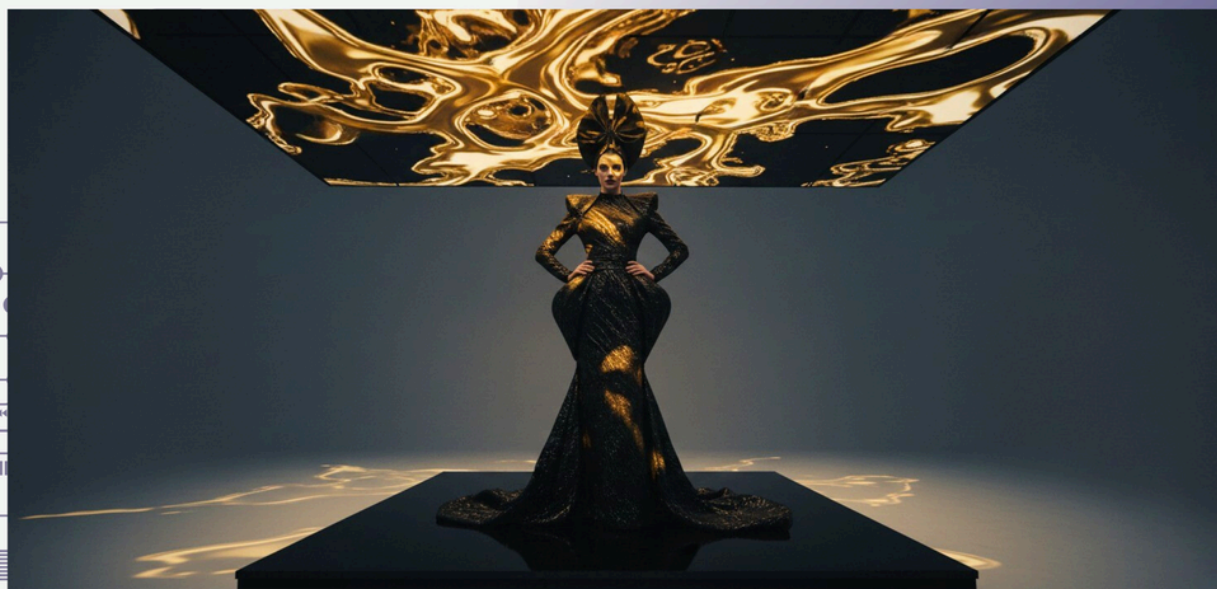


Engineered for the Speed of Production

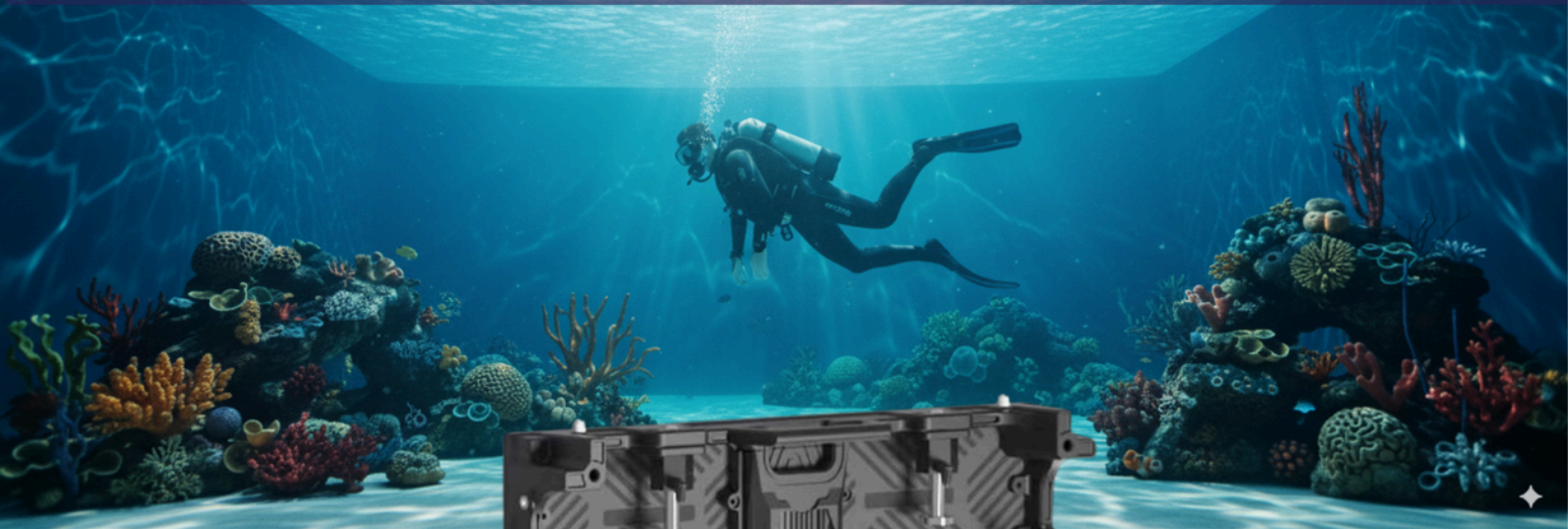
The most advanced technology is useless if it slows you down.

We designed the HoloSky™ with the practical realities of a fast-paced production environment in mind.

- **Agile & Lightweight:** The advanced chassis, constructed from die-cast aluminum or carbon fiber, is incredibly robust yet lightweight, simplifying rigging.
- **Flexible by Design:** Whether you need a fully encapsulated ceiling or a partial rig that tilts for key lighting, its flexible design gives gaffers control.
- **Flawless On-Camera:** A blazingly fast refresh rate ensures your footage is completely free of flicker or moiré, no matter the camera or frame rate.



HOLODECK HoloSky™ Series



Clean Cable Management



Panel / Tile
500x1000mm

Technical Specifications

-
-
-
-

PANEL & MECHANICAL

- Pixel Pitch
- Panel Dimensions (WxH)
- Panel Resolution (WxH)
- Panel Weight
- Chassis Material
- Serviceability

OPTICAL PERFORMANCE

- LED Configuration
- Brightness (Calibrated @ 6500K)
- Refresh Rate
- Contrast Ratio
- Display Colors / Bit Depth
- Gamut Coverage
- Viewing Angle (H/V)
- Theoretical Lifetime (L50)

VIDEO & PROCESSING

- Receiver Card
- Latency
- Control Software
- Supported Video Sources
- Working Voltage

ENVIRONMENTAL

- IP Rating
- Operating Temperature
- Cooling System

CERTIFICATIONS

- Compliance

HoloSky™ 5

5.9 mm
500×1000 mm
85×169 pixels
14KG (31 lbs)
Aluminum Die-cast
Front Module / Rear Power Box

HoloSky™ 7

7.8 mm
500×1000 mm
64×128 pixels

RGBW
4500 - 5000 NITS
3840 Hz
8000:1
18Bit / 90% TLCI/CRI
DCI-P3 (up to 99.6%), BT.2020 (up to 90%)
>170° / >170°
<100,000 Hrs (Perfect Laboratory Environment)

Brompton R2
<15 ms or <2 frames
Provided by Processor Vendor (Brompton)
DP, SDI, S-Video, Composite, HDMI, VGA, CVBS
110-240V AC, 50/60Hz

IP54
+4° to +120° F
Convection or Silent Fans

ETL, MET, CE, FCC, RoHS



QUESTIONS?



CONTACT US TODAY ↘

Office/Sales:

office@holodeckled.com
213-996-0655

Connect³:

connect@holodeckled.com
213-996-0746

ASK YOUR LOCAL REP/DISTRIBUTOR

CONTACT:

Email;

Phone:



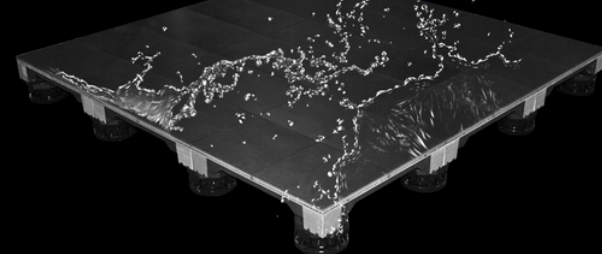
www.holodeckled.com

VIRTUAL PRODUCTION LINE



HOLODECK™ VP

HOLOFLOOR™



Copyright © 2025 HOLODECK™ LED - a subsidiary of QST LED